

CITY TRAFFIC ENGINEER'S REPORT

ISSUE NO. TC 773

Stop Signs on SW 22nd Street and SW Red Haven Drive/SW Rochester Drive

April 18th, 2018

Background Information

Officer Steven Schaer of the Beaverton Police Department requested evaluation of stop control at the intersection of SW 22nd Street and SW Red Haven Drive/SW Rochester Drive. He requested this study on behalf of a citizen who requested stop signs along with concerns of speeding.

A traffic count collected in March 2018 at the intersection showed that in a 24-hour period a total of 1023 vehicles entered the intersection from the west, 1180 vehicles entered from the east, 98 vehicles entered from the north and 68 vehicles entered from the south. As shown, there was a significant difference in daily traffic volumes between the major and minor streets. There was no reported crashes during the most recent three years of available crash data.

Although the intersection did not meet the warrant for multi-way stop control, staff is recommending to install stop signs on SW Red Haven Drive and SW Rochester Drive at its intersection with SW 22nd Street. This is due to the restricted view on the side streets because of the curvature and roadway. The Manual on Uniform Traffic Control Devices (MUTCD) guidance allows placement of stop signs to control the direction that has obscured vision that already require drivers to use lower operating speeds.

Applicable Criteria

Applicable criteria from Beaverton Code 6.02.060A are:

- 1a (provide for safe vehicle, bicycle and pedestrian movements);
- 1b (help ensure orderly and predictable movement of vehicles, bicycles, and pedestrians).
- 2 (all proposed new traffic control devices shall be based on the standards of the MUTCD)

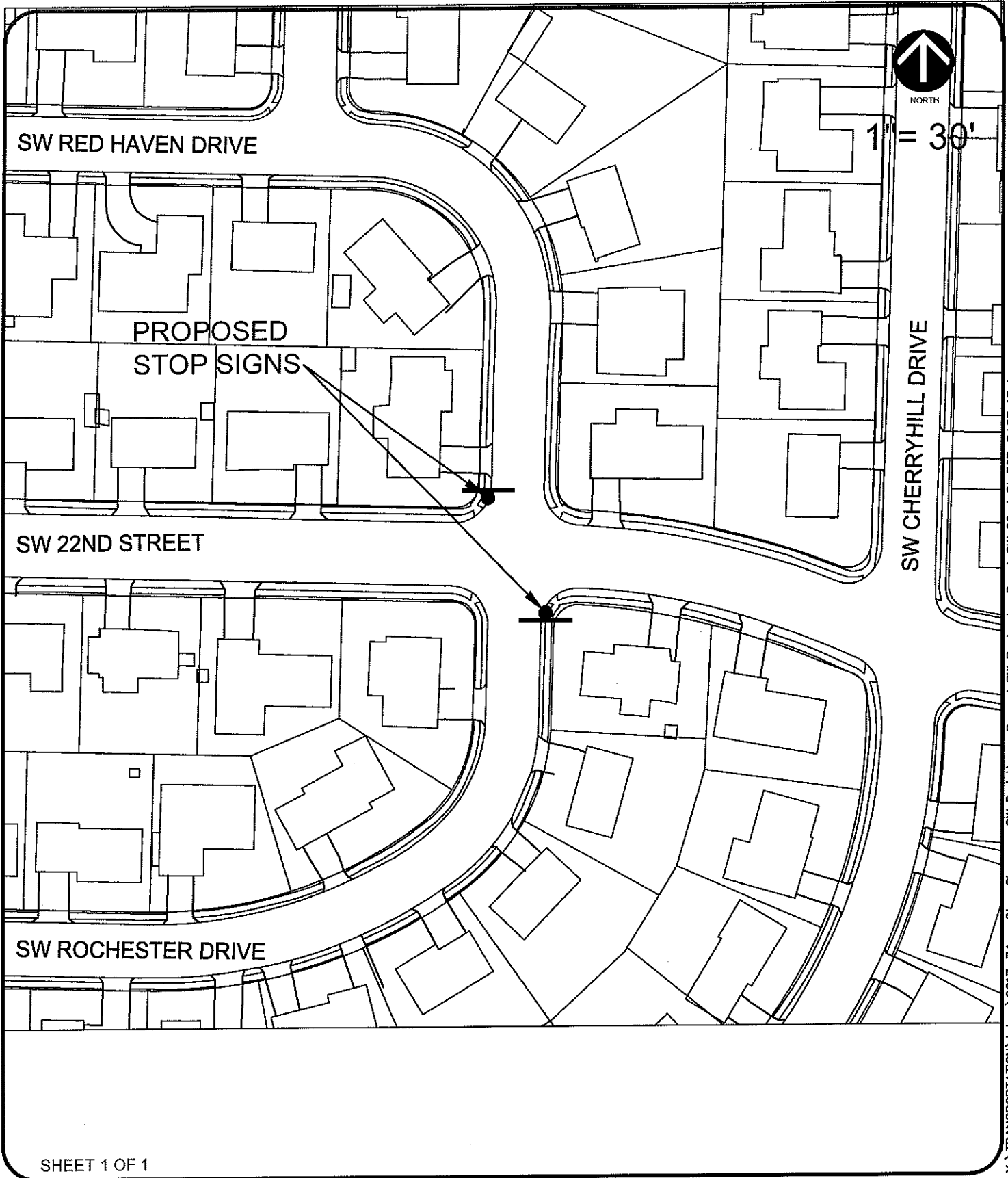
Conclusions:

1. Installing stop signs on SW Red Haven Drive and SW Rochester Drive at its intersection with SW 22nd Street will improve safety by allowing drivers to more effectively see vehicles on intersecting street satisfying Criterion 1a.
2. Traffic on SW 22nd Street will continue to be able to proceed without stopping. Potential conflict between traffic on SW 22nd Street and the side streets will reduce as stop signs will indicate who has the right of way, satisfying Criterion 1b.

3. The stop sign meets the standards of the MUTCD satisfying Criterion 2.

Recommendation:

1. Install stop signs on SW Red Haven Drive and SW Rochester Drive at its intersection with SW 22nd Street.



**STOP SIGN ON SW RED HAVEN DR
AND SW ROCHESTER DR AT SW 22ND ST**

**PUBLIC WORKS DEPARTMENT
TRANSPORTATION DIVISION**

Drawn By: TC Date: 3/29/2018

Reviewed By: _____ Date: _____

Approved By: _____ Date: _____