

Four easy steps to start!

STEP 1

Contact Compost at Work for free information and resources



- Schedule a consultation and walk-through.
- Order free indoor collection containers, posters and stickers for your workplace.
- Schedule a training with Compost at Work staff to learn what can be composted.

STEP 2

Set up compost containers and signage



- Locate indoor compost near garbage containers to make composting easy.
- Post FOOD ONLY stickers on compost containers where they are easily visible.
- Place composting posters in high traffic areas like kitchens and break rooms as reminders.

STEP 3

Train employees



- Identify employees who will be involved with composting and their roles.
- Explain your reasons for composting and why it is important to your business.
- Designate a “compost champion” who can answer questions and help train employees.
- Make sure new employees are trained in the program.

STEP 4

Start composting



- Collect food scraps in indoor containers.
- Dump food scraps from indoor containers into outdoor container.
- Your waste hauler will empty the outdoor container on a regular basis.
- Contact your waste hauler about missed pickups or service level adjustments.

Contact us today for free assistance:

503-526-2460

recyclingmail@BeavertonOregon.gov

Ready to do more?

Minimize food waste your business produces by donating to a food rescue agency, reducing portion sizes, or finding new uses for food. Learn more:

BeavertonOregon.gov/compost

FOOD ONLY



NO

- Liquids, grease or cooking oil

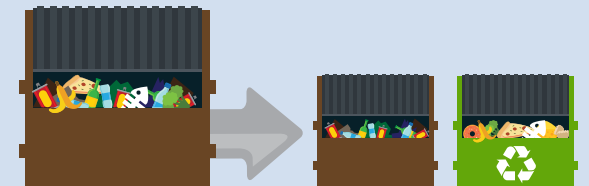
- Metal
- Glass
- Garbage
- Cardboard or paper
- Plastic or styrofoam
- Flowers or plants

Save Money. Do Good.

COMPOST AT WORK



Businesses save money when they compost enough food scraps to shrink their garbage service. Food scraps are kept out of the landfill and used to power homes.



Why start composting?

Save money on your garbage bills

Compost collection service is included with most garbage service through your garbage and recycling collector. Businesses that reduce their garbage bin size by separating food scraps can save money on their garbage bill.

Put your food scraps to use

When you sign up for compost collection, your food scraps are turned into useful energy that powers Oregon homes.

Reduce greenhouse gas emissions from the landfill

Every year, Beaverton businesses send over 7 million pounds of food waste to the landfill. When sent to the landfill, food scraps produce methane – a greenhouse gas over 20 times more powerful than carbon dioxide (CO₂). The composting process reduces the amount of methane released into the atmosphere and helps limit the impacts of climate change.

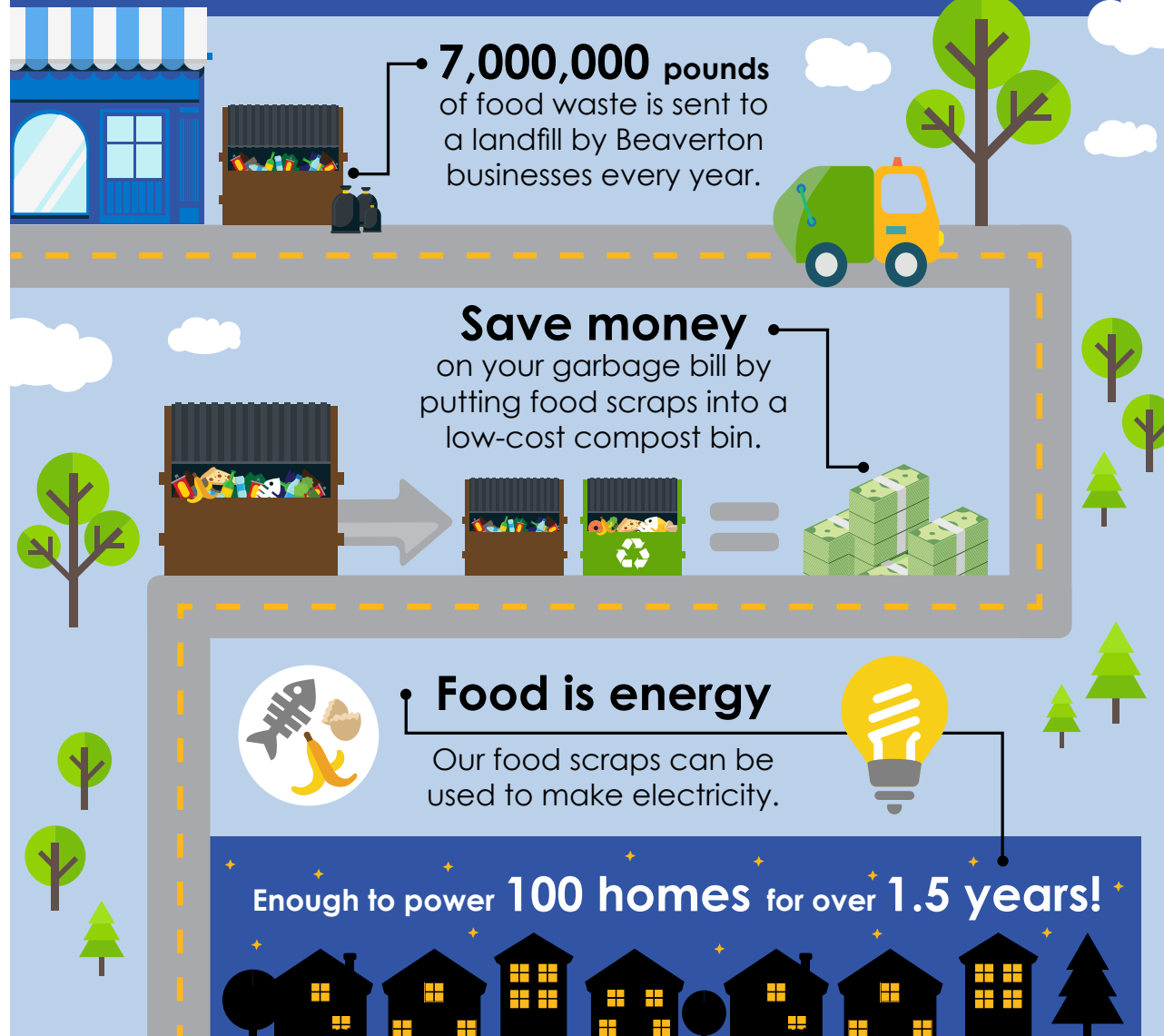
Compost service reduces this waste and helps our community become more sustainable.

What Beaverton businesses say about composting

“Our business composts because we realize that with the amount of people we serve, the way we handle our waste can have a big impact on the environment. Composting is easy, with minimal training required and very little extra labor. We also save money on our waste disposal bills.”

COMPOST AT WORK

Save Money. Do Good.



Get started

Contact us to receive free tools and training.

503-526-2460

recyclingmail@BeavertonOregon.gov

Tips for a successful compost program



Avoid non-compostable items in your compost

Teach staff what materials do and do not belong in compost. If more than 5 percent of the bin is non-compostable items, the contents are charged as garbage.



Keep indoor compost containers clean

There are multiple options to keep indoor containers clean.

- Wash indoor containers as needed and discard water into a sanitary sewer drain.
- Use a liner for indoor containers. Approved BPI compostable liners can be tossed into outdoor compost bins. Plastic liners go in the garbage after dumping food scraps.



Care for outdoor compost containers to minimize odors

- Keep the outdoor container lid closed and shaded to reduce odors.
- Ask your hauler to exchange your outdoor container for a clean one – each business receives one free container swap per year.