

10 SOCIAL OPPORTUNITIES

Usable open space. To ensure that employees, visitors and residents have adequate access to usable open space and common facilities that enhance the experience of living in, working in and visiting Downtown Beaverton, the new proposed rules establish guidelines and standards for four types of usable open space. (Section 70.04.2.4)

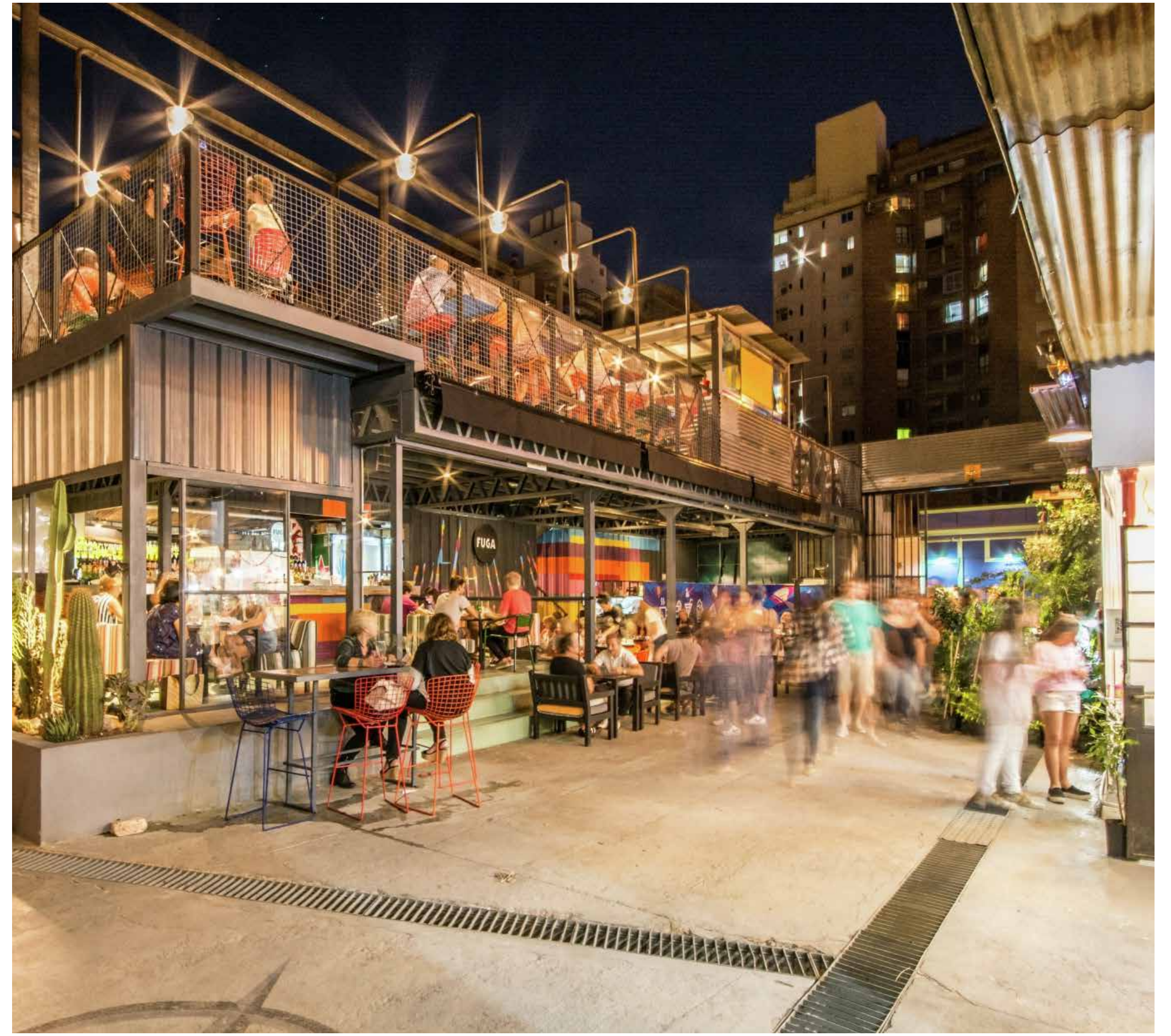
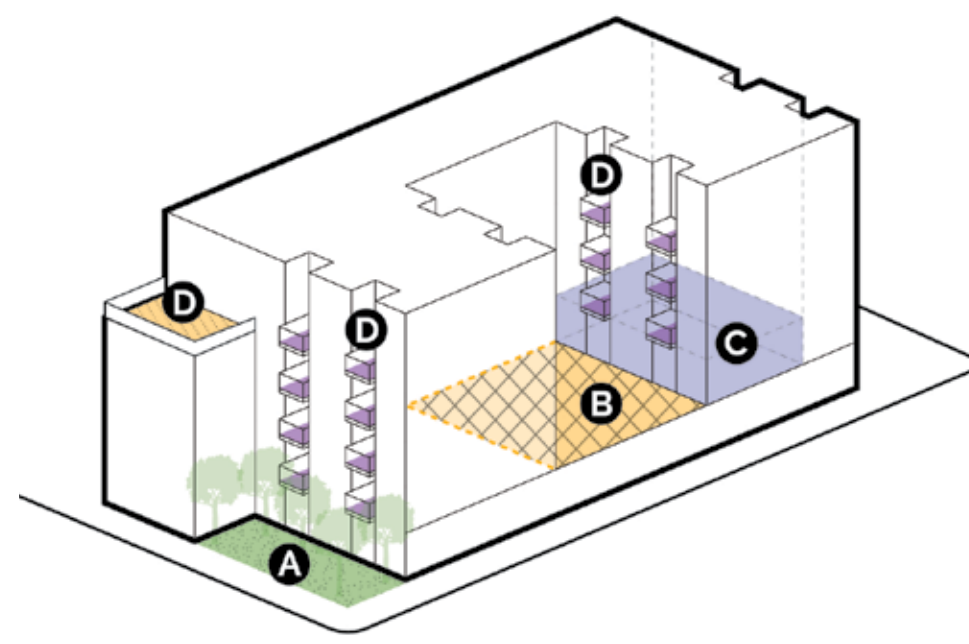
These rules vary according to the size, density of uses, and tenants on site. They include:

A. Publicly accessible open spaces such as plazas, terraces, atriums, and small parks, which are provided and maintained by private developers.

B. Shared open space, an outdoor area within a development provided for the use or enjoyment of all users of the development that may be but are not required to be open to the public.

C. Common community room, an indoor space available to building tenants.

D. Private open space, such as front porches, balconies and roof courtyards.



A Pedestrian path and courtyard



B Shared open space



C Common community room



D Private open space (balcony)

Making Downtown even more vibrant. Modernizing city rules to reflect current trends and community interests allowed developments like the BG Food Cartel to become the regional draw it is today. This new set of proposed rules intends to encourage or allow even more places to gather with our friends, family, neighbors, and colleagues.



Get involved:
www.BeavertonOregon.gov/DowntownDesign

